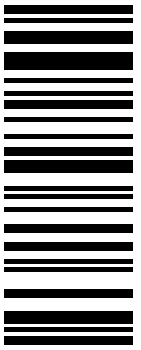


N10/3/GEOGR/BP2/ENG/TZ0/XX/RE



88105204



International Baccalaureate®  
Baccalauréat International  
Bachillerato Internacional

**GEOGRAPHY**  
**HIGHER LEVEL AND STANDARD LEVEL**  
**PAPER 2 – RESOURCES BOOKLET**

Wednesday 17 November 2010 (morning)

---

**INSTRUCTIONS TO CANDIDATES**

- Do not open this resources booklet until instructed to do so.
- Use the resources as appropriate to the questions in paper 2.



### C11. Topographic mapping

The map shows the area around Zeebrugge; a commercial port in Belgium.  
The scale of the map is 1:50 000 and the contour interval is 2.5 metres. The map is dated 2002 and the satellite photograph is dated 2005.



[Source: Satellite image of Zeebrugge, Institut Géographique National – Bruxelles – www.ign.be]

### Key/Legend for map:

		Parking place : with/without filling station	
<b>Main roads</b>	<b>Secondary roads</b>	<b>Linking roads</b>	<b>Other roads</b>

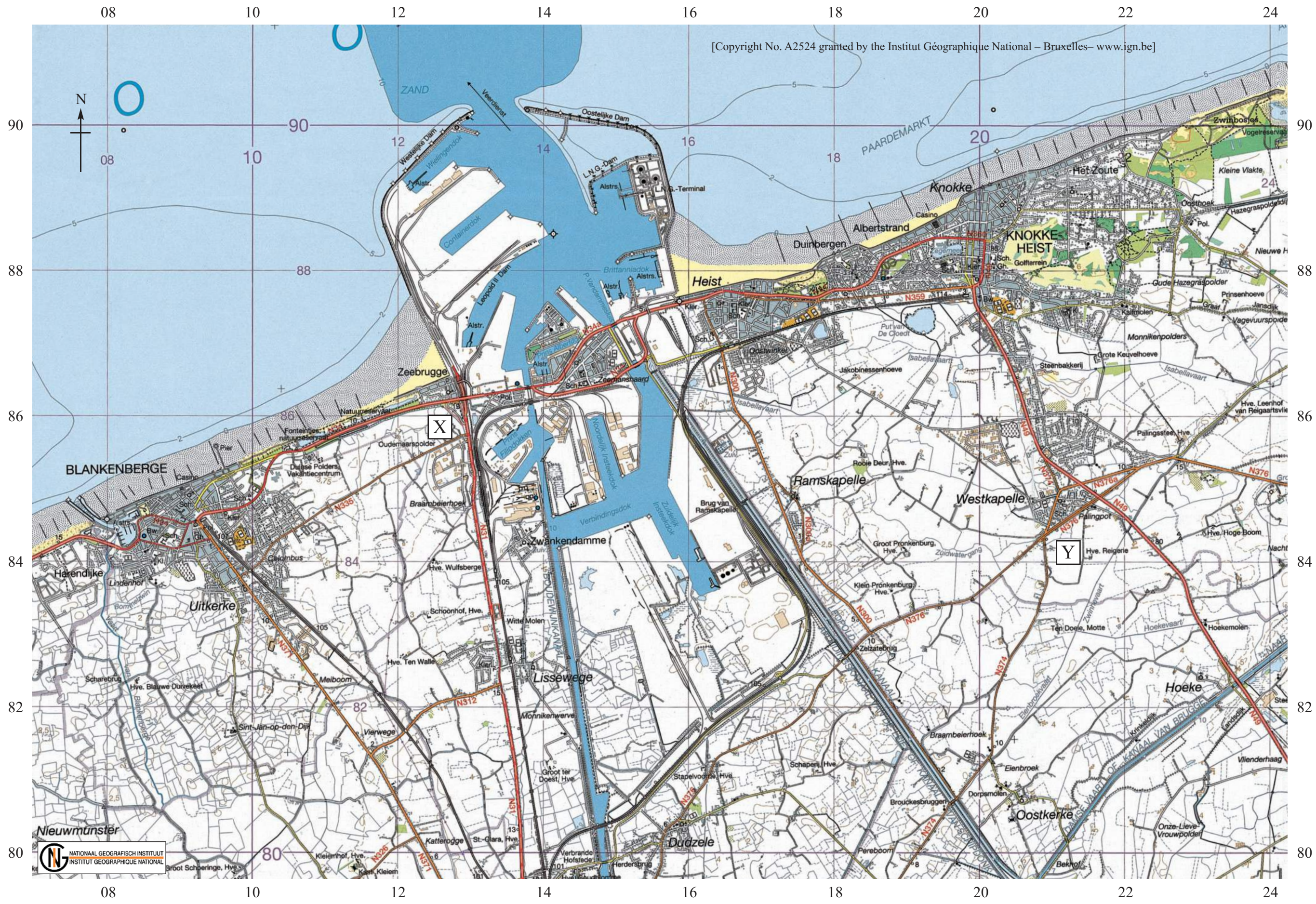
  

	a. Watercourse wider than 50 m
	b. Watercourse 25 m to 50 m wide
	c. Watercourse 15 m to 25 m wide
	d. Watercourse 3 m to 15 m wide
	e. Brook
	f. Intermittent watercourse
	g. Pond
	h. Swamp, marsh
	i. Spring, fountain, well, reservoir
	1. Navigable
	2. Unnavigable
	Footbridge – Lock – Culvert – Dam
	Visible water pipe
	Tower – Water-tower – Cooling-tower
	Chimney stack – Conspicuous tree – Pylon (telecommunication)
	Stone – Kilometre stone
	Lighthouse – Signal-light – Beacon
	Cemetery – Ruin – Greenhouse
	(1) Contour
	(2) Auxiliary contour
	(3) Index contour
	• 11,3 78 Spot height – Height rounded to the metre

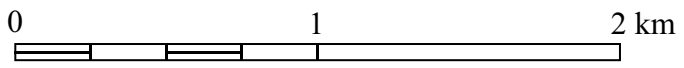
Beek	Brook
Font.	Fountain
Pomp.	Pumping station
Res.	Reservoir
Zuiv.	Filtration bed
Ab.	Abbey
Alstr.	Landing-stage
Beg.	Beguinage
Bw.	Fire station
Calv.	Wayside cross
Gh.	Town hall
Hve	Farm
Kap.	Chapel or shrine
Kast.	Castle
Kl.	Nursing home
Kler	Convent
Mol.	Mill
Pl	Pole
Pol.	Integrated police force
Sch.	School
Stgve	Quarry
Vml.	Former
Zandgr.	Sandpit





**Nieuwmünster**  
 NATIONAL GEOGRAFISCH INSTITUUT  
 INSTITUT GEOGRAPHIQUE NATIONAL

Scale 1:50 000



CONTOUR INTERVAL 2.5 METRES

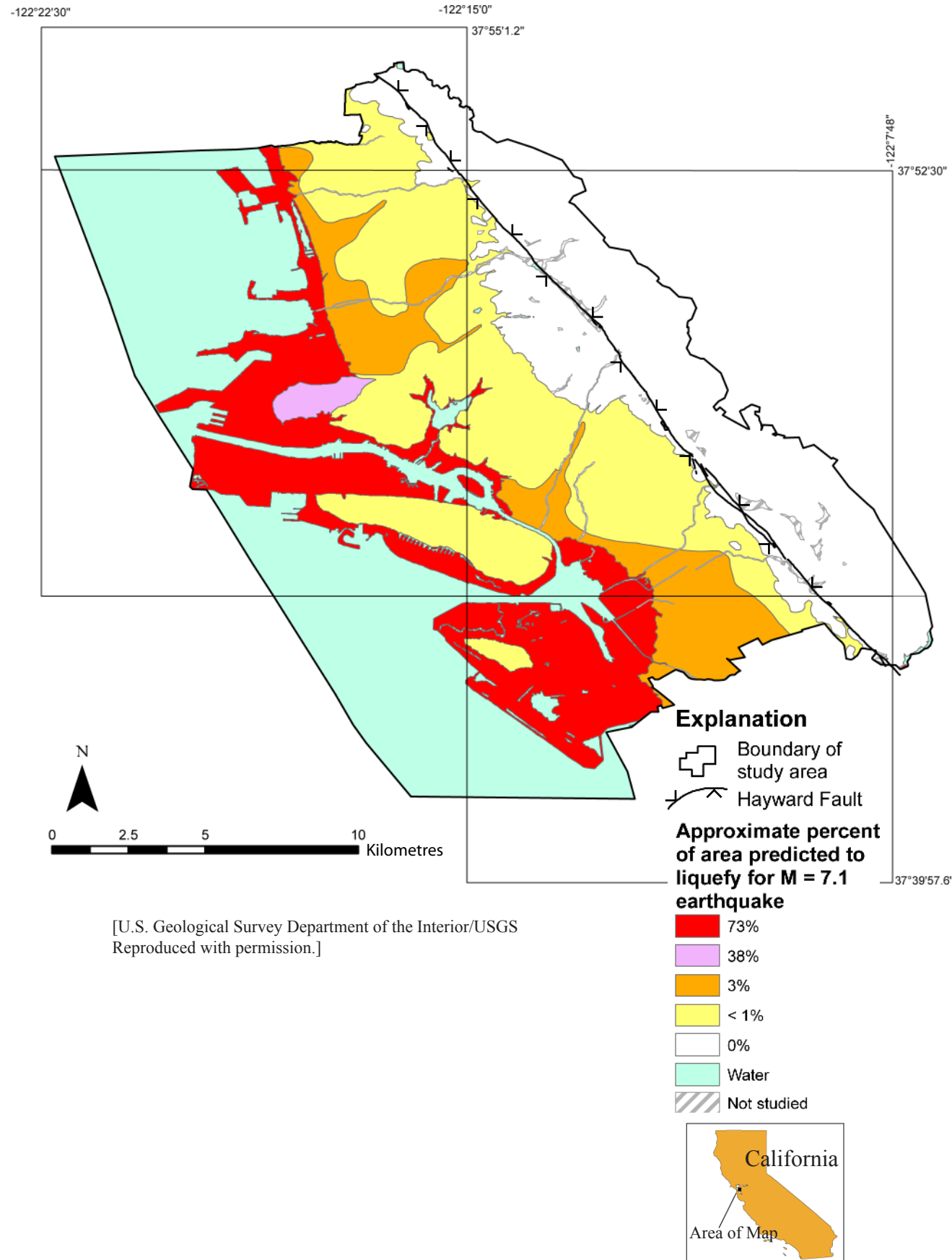
[Source: Institut Géographique National – Bruxelles – www.ign.be]



### A4. Lithospheric processes and hazards

#### (b) Structured question

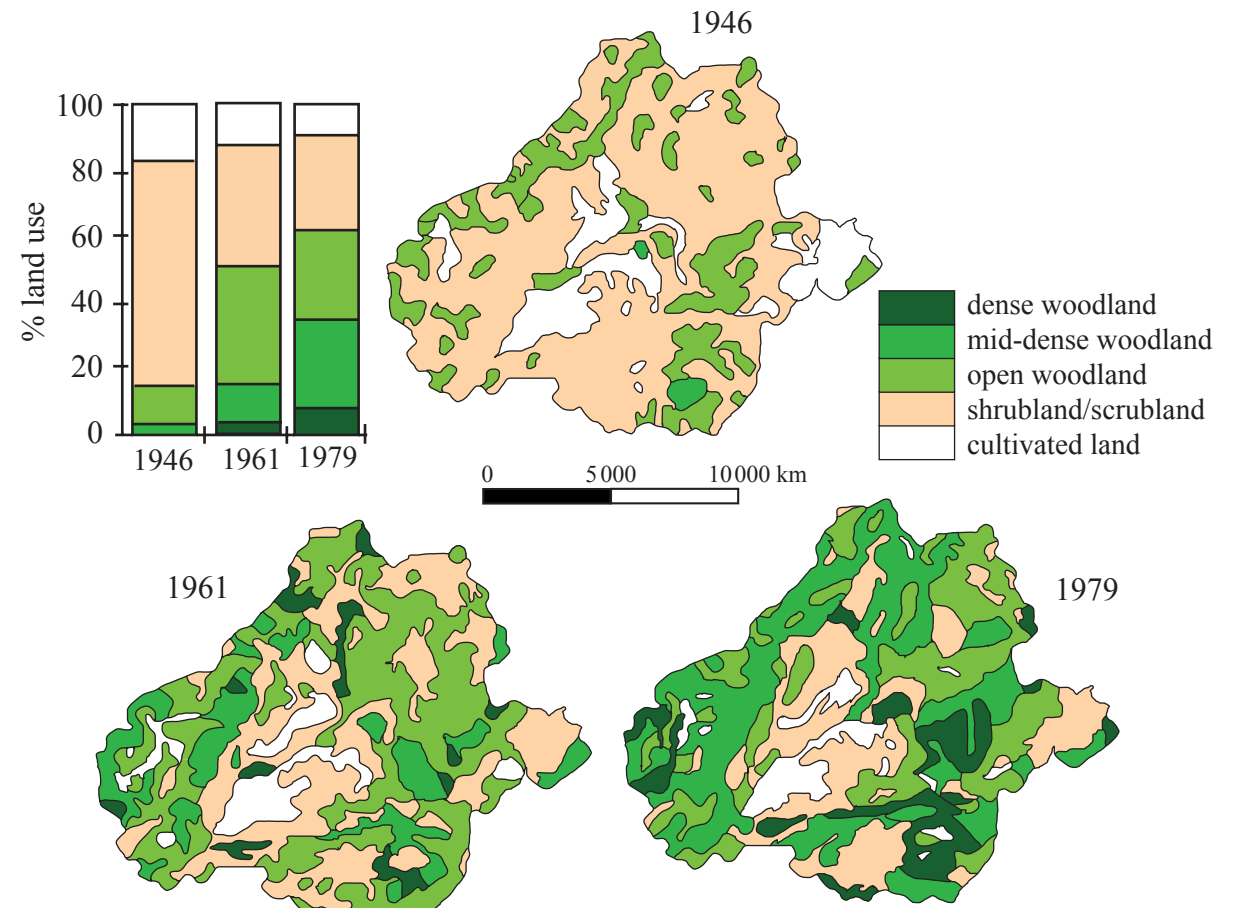
The map shows the liquefaction hazard in the communities of Alameda, Berkeley, Emeryville, Oakland, and Piedmont for a magnitude 7.1 earthquake on the Hayward fault (West Coast of the USA).



### A5. Ecosystems and human activity

#### (b) Structured question

The maps show the changes in vegetation cover which have taken place over a 33 year period in one area in Mediterranean France.

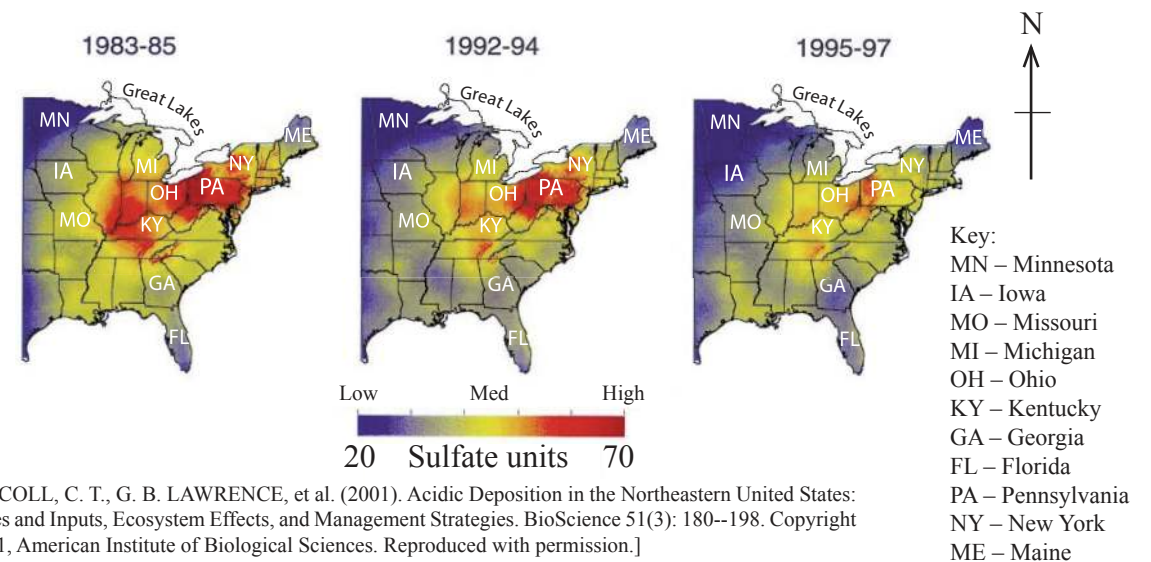


[Source: Institut für Angewandte Forschung, FH Nürtingen, Schelmenwasen 4-8, D-72622 Nürtingen, Fig 2 – change of vegetation formations over time – region St-Martin-de-Londres 1946 – 1979.]

### A6. Climatic hazards and change

#### (b) Structured question

The maps show the pattern of wet acid deposition (the higher the value of sulfate units, the more acidic the deposition) for the eastern USA for three different three-year periods.



[DRISCOLL, C. T., G. B. LAWRENCE, et al. (2001). Acidic Deposition in the Northeastern United States: Sources and Inputs, Ecosystem Effects, and Management Strategies. BioScience 51(3): 180-198. Copyright © 2001, American Institute of Biological Sciences. Reproduced with permission.]